

**DMR™**



[www.daemar.com](http://www.daemar.com)



# KEYSTOCK AND SHIM



For over 30 years Daemar® Inc. has remained focused on partnering with our customers to deliver precision component solutions that meet their business challenges. Whether the application is a new design or a maintenance requirement, Daemar's global partnerships offer you one of the most complete sources of supply for Keystock and Shim. To ensure that Daemar® consistently meets or exceeds customer requirements, Daemar® is ISO-9001:2000 registered and most suppliers have either TS16949-2000, QS-9000 or ISO-9001:2000 quality registrations.

Daemar® has developed all of the capabilities required to support your lean manufacturing initiatives – providing JIT delivery, vendor managed inventories and computer systems

integration. Supported by the Daemar® regional warehousing network you experience fast, courteous service throughout the world. All of Daemar's locations are fully stocked and staffed with experienced and knowledgeable sales and service professionals.

We trust that you will find this catalogue a valuable resource for selecting the appropriate Keystock and Shim for your applications. For further selection assistance, pricing and product availability please contact the Daemar® location nearest you.



Quality .....	2
Slotted Shim Kits.....	3
Slotted Shim Replacement Packs.....	4-5
Shim In A Can .....	6-9
Plastic Shim.....	10-11
Square Keystock .....	12-13
Rectangular Keystock .....	14-16
Undersize Tolerance Barstock.....	17-18
Metric Keystock .....	19-20
Step Keystock .....	21-22
Standard Assortments Of Square Keystock.....	23
3 Foot Shafts .....	24
Woodruff Keys.....	25-26
Woodruff Key Kits .....	27
Gib Head Machine Keys.....	28-29
Machinery Keys.....	30
Spring Pin Kits.....	32

## ISO-9001:2000 Registered

To consistently meet and exceed our customers' expectations, Daemar® Inc. is ISO-9001: 2000 registered and most of our suppliers are QS-9000 and/or ISO-9000 quality registered.





DMR™ slotted shims are manufactured from 304 stainless steel. Each kit contains 10 (mini) or 20 (standard) shims of each thickness (.001, .002, .003, .004, .005, .010, .015, .020, .025, .050, .075, .100, .125). Let DMR™ kits provide the right solution for all of your slotted shim applications.

All shims are permanently etched with thickness and size information for ease of selection

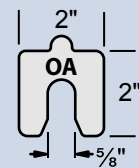
Wide slots for versatility and ease of installation

DMR™ Extended Tab for ease of installation

Sturdy steel carrying case aids in organization, storage and transport

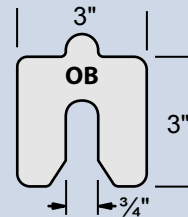
### Size A Kit

Mini (OA-KIT-10)
Standard(OA-KIT-20)



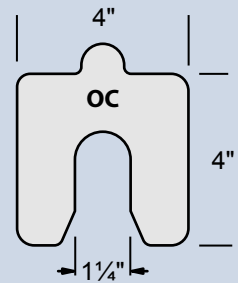
### Size B Kit

Mini (OB-KIT-10)
Standard(OB-KIT-20)



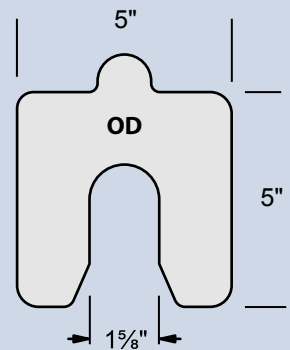
### Size C Kit

Mini (OC-KIT-10)
Standard(OC-KIT-20)



### Size D Kit

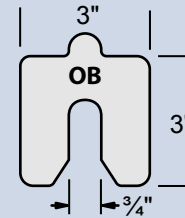
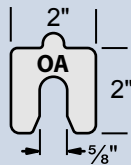
Mini (OD-KIT-10)
Standard(OD-KIT-20)



DMR slotted shim replacement kits are available in 10 piece and 20 piece packs.

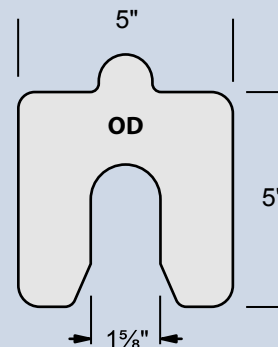
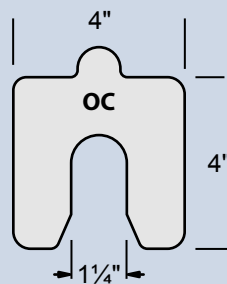
DMR #	THICKNESS	SHIM SIZE	PIECES PER PACK
.001-OA	0.001	2" x 2"	20
.001-OA-10	0.001	2" x 2"	10
.002-OA	0.002	2" x 2"	20
.002-OA-10	0.002	2" x 2"	10
.004-OA	0.004	2" x 2"	20
.004-OA-10	0.004	2" x 2"	10
.005-OA	0.005	2" x 2"	20
.005-OA-10	0.005	2" x 2"	10
.010-OA	0.010	2" x 2"	20
.010-OA-10	0.010	2" x 2"	10
.020-OA	0.020	2" x 2"	20
.020-OA-10	0.020	2" x 2"	10
.025-OA	0.025	2" x 2"	20
.025-OA-10	0.025	2" x 2"	10
.050-OA	0.050	2" x 2"	20
.050-OA-10	0.050	2" x 2"	10
.075-OA	0.075	2" x 2"	20
.075-OA-10	0.075	2" x 2"	10
.100-OA	0.100	2" x 2"	20
.100-OA-10	0.100	2" x 2"	10
.125-OA	0.125	2" x 2"	20
.125-OA-10	0.125	2" x 2"	10

DMR #	THICKNESS	SHIM SIZE	PIECES PER PACK
.001-OB	0.001	3" x 3"	20
.001-OB-10	0.001	3" x 3"	10
.002-OB	0.002	3" x 3"	20
.002-OB-10	0.002	3" x 3"	10
.004-OB	0.004	3" x 3"	20
.004-OB-10	0.004	3" x 3"	10
.005-OB	0.005	3" x 3"	20
.005-OB-10	0.005	3" x 3"	10
.010-OB	0.010	3" x 3"	20
.010-OB-10	0.010	3" x 3"	10
.020-OB	0.020	3" x 3"	20
.020-OB-10	0.020	3" x 3"	10
.025-OB	0.025	3" x 3"	20
.025-OB-10	0.025	3" x 3"	10
.050-OB	0.050	3" x 3"	20
.050-OB-10	0.050	3" x 3"	10
.075-OB	0.075	3" x 3"	20
.075-OB-10	0.075	3" x 3"	10
.100-OB	0.100	3" x 3"	20
.100-OB-10	0.100	3" x 3"	10
.125-OB	0.125	3" x 3"	20
.125-OB-10	0.125	3" x 3"	10



DMR #	THICKNESS	SHIM SIZE	PIECES PER PACK
.001-OC	0.001	4" x 4"	20
.001-OC-10	0.001	4" x 4"	10
.002-OC	0.002	4" x 4"	20
.002-OC-10	0.002	4" x 4"	10
.004-OC	0.004	4" x 4"	20
.004-OC-10	0.004	4" x 4"	10
.005-OC	0.005	4" x 4"	20
.005-OC-10	0.005	4" x 4"	10
.010-OC	0.010	4" x 4"	20
.010-OC-10	0.010	4" x 4"	10
.020-OC	0.020	4" x 4"	20
.020-OC-10	0.020	4" x 4"	10
.025-OC	0.025	4" x 4"	20
.025-OC-10	0.025	4" x 4"	10
.050-OC	0.050	4" x 4"	20
.050-OC-10	0.050	4" x 4"	10
.075-OC	0.075	4" x 4"	20
.075-OC-10	0.075	4" x 4"	10
.100-OC	0.100	4" x 4"	20
.100-OC-10	0.100	4" x 4"	10
.125-OC	0.125	4" x 4"	20
.125-OC-10	0.125	4" x 4"	10

DMR #	THICKNESS	SHIM SIZE	PIECES PER PACK
.001-OD	0.001	5" x 5"	20
.001-OD-10	0.001	5" x 5"	10
.002-OD	0.002	5" x 5"	20
.002-OD-10	0.002	5" x 5"	10
.004-OD	0.004	5" x 5"	20
.004-OD-10	0.004	5" x 5"	10
.005-OD	0.005	5" x 5"	20
.005-OD-10	0.005	5" x 5"	10
.010-OD	0.010	5" x 5"	20
.010-OD-10	0.010	5" x 5"	10
.020-OD	0.020	5" x 5"	20
.020-OD-10	0.020	5" x 5"	10
.025-OD	0.025	5" x 5"	20
.025-OD-10	0.025	5" x 5"	10
.050-OD	0.050	5" x 5"	20
.050-OD-10	0.050	5" x 5"	10
.075-OD	0.075	5" x 5"	20
.075-OD-10	0.075	5" x 5"	10
.100-OD	0.100	5" x 5"	20
.100-OD-10	0.100	5" x 5"	10
.125-OD	0.125	5" x 5"	20
.125-OD-10	0.125	5" x 5"	10



## STAINLESS STEEL

DMR Stainless Steel Shim can be used in any application where corrosion is a concern. DMR Stainless Steel is 300 Series, full hard tempered (half-hard and annealed Stainless is also available on request). Full-hard Stainless Steel is slightly magnetic due to cold rolling. Stainless Steel Shim Stock has a Rockwell hardness of C40-45 and meets the following specifications: MIL-S-5059, QQS766 and QQS763. Special slit widths are also available on request. Typical weight: .010" X 6" X 50" = .875lbs.

### 6" X 50" ROLLS

THICKNESS	DMR PART #
.0005	10905-0005
.001	10001-001
.0015	10805-015
.002	10002-002
.003	10003-003
.004	10004-004
.005	10005-005
.006	10006-006
.007	10007-007
.008	10008-008
.009	10009-009
.010	10010-010
.012	10012-012
.015	10015-015
.020	10020-020
.025	10025-025
.031	10031-031

### 12" X 50" ROLLS

THICKNESS	DMR PART #
.001	12001-001
.002	12002-002
.003	12003-003
.004	12004-004
.005	12005-005
.006	12006-006
.007	12007-007
.008	12008-008
.010	12010-010
.012	12012-012
.015	12015-015
.020	12020-020
.025	12025-025
.031	12031-031

### STAINLESS STEEL SHIM TOLERANCES

DECIMAL THICKNESS	6" WIDTH	12" WIDTH
.0005-.010	+/- 10%	+/- 10%
.011 - .019	+/- .001	+/- .0015
.020 -.028	+/- .0015	+/- .0015
.029 - .031	+/- .002	+/- .002
Width Tolerance	+/- .005	+/- .010

## BRASS

DMR Brass Shim Stock is used where some stiffness is required and where corrosion problems exist. It has been cold rolled to a 1/2 hard temper with a tensile strength of approx. 62,000 PSI. Brass Shim Stock is 70% Copper & 30% Zinc. It has a Rockwell hardness of 30T 56/68.

Brass Shim Stock meets the following specifications: SAE-CA 260, ASTM-B-36, AMS-4507 & QQB-613-#2. Typical weight : .010" X 6" X 100" 1.8 lbs.

### 6" X 100" ROLLS

THICKNESS	DMR PART #
.001	20001-001
.0015	20805-015
.002	20002-002
.003	20003-003
.004	20004-004
.005	20005-005
.006	20006-006
.007	20007-007
.008	20008-008
.009	20009-009
.010	20010-010
.012	20012-012
.015	20015-015
.020	20020-020
.025	20025-025
.031	20031-031

### 12" X 120" ROLLS

THICKNESS	DMR PART #
.001	22001-001
.002	22002-002
.003	22003-003
.004	22004-004
.005	22005-005
.006	22006-006
.008	22008-008
.010	22010-010

### STEEL SHIM TOLERANCES

DECIMAL THICKNESS	6" WIDTH	12" WIDTH
.001-.003	+/- 10%	+/- 10%
.004	+/- .0003	+/- .0006
.005 - .006	+/- .0004	+/- .0008
.007-.009	+/- .0006	+/- .0010
.010 - .013	+/- .0008	+/- .0013
.014 - .017	+/- .0010	+/- .0015
.018 - .021	+/- .0013	+/- .0018
.022 - .031	+/- .002	+/- .002
Width Tolerance	+/- .008	+/- .008

## STEEL SHIM STOCK

DMR Steel Shim is low carbon mild steel cold rolled to a #1 hard temper. It is stiff and springy, and can be used where hardness is required. The material can be punched or sheared with minimum burring and distortion. Steel Shim Stock meets the following specifications: AISI 1010 & QQS 698. Available in .001" to .031" and in standard packages 6" X 100" or 12" X 120". Special slit widths are also available on request. Typical weight .010" X 6" X 100" = 1.7lbs.

### 6" X 100" ROLLS

THICKNESS	DMR PART #
.001	30001-001
.0015	30805-015
.002	30002-002
.003	30003-003
.004	30004-004
.005	30005-005
.006	30006-006
.007	30007-007
.008	30008-008
.009	30009-009
.010	30010-010
.012	30012-012
.015	30015-015
.020	30020-020
.025	30025-025
.031	30031-031

### 12" X 120" ROLLS

THICKNESS	DMR PART #
.001	32001-001
.002	32002-002
.003	32003-003
.004	32004-004
.005	32005-005
.006	32006-006
.007	32007-007
.008	32008-008
.009	32009-009
.010	32010-010
.012	32012-012
.015	32015-015
.018	32018-018
.020	32020-020
.025	32025-025
.031	32031-031

### STEEL SHIM TOLERANCES

Decimal Thickness	6" Width	12" Width
.001-.003	+/- 10%	+/- 10%
.0035-.006	+/- .005	+/- .005
.007-.018	+/- .00075	+/- .00075
.020-.025	+/- .001	+/- .001
.031	+/- .0015	+/- .0015
Width Tolerance	+/- .005	+/- .010

## NICKEL

DMR Nickel Shim Stock is a 200 grade annealed material. It meets the following specifications: ASTM-B-160, B161, B162, B163 & B366. Nickel shim is available in thickness from .001" to .010" and in standard packages of 6" X 50". Special slit widths are also available on request. Typical weight: .010" X 6" X 50' = .48 lbs.

## ALUMINUM

DMR Aluminum Shim Stock is a type 1100, which has a minimum aluminum content of 99%. Its temper is H-18, full hard. Aluminum shim stock has excellent corrosion resistance and high thermal and electrical conductivity. The material meets the following specifications: QQA 250, MIL-W-85, ASTM-B-209. Aluminum shim is available in thicknesses from .001" to .010" and in standard packages of 6" x 100". Special slit widths are available on request. Typical weight: .010" x 6" x 100" = .57 lbs.

### ALUMINUM SHIM TOLERANCES

DECIMAL THICKNESS	TOLERANCE
.001-.010	+/- 5%
Width Tolerance	+/- .0625

## BLUE TEMPERED

DMR Blue Tempered Shim Stock is 1095 high carbon spring steel. It has a Rockwell hardness of C 48/51. Blue Tempered Spring Steel is polished and blued. Blue Tempered Spring Steel shim is available in thicknesses from .002" to .032", 6" x 25" . Special slit widths are available on request. Typical weight: .010" x 6" x 50" = .88 lbs.

### BLUE TEMPERED TOLERANCES

DECIMAL THICKNESS	3" TO 6" WIDTHS
.002 - .004	+/- .0005
.010 - .013	+/- .001
.020 - .032	+/- .002
Width Tolerance	+/- .005

## ANNEALED STEEL

DMR Annealed Steel is 1075 high-Carbon steel, which is heat treatable. Annealed Steel is a spheroidized annealed temper. DMR Annealed Shim Stock is the only shim that can be formed in its annealed condition, and then heat-treated to a hard (spring) temper. Special slit widths upon request. Typical weight: .032" x 6" x 50" = 2.5lbs.

## COPPER

DMR Copper Shim Stock is a 110 alloy material in the annealed (soft) condition. Copper shim meets the following specifications; CDA-110, MIL-C12168, QQC-576. Copper shim is available in thicknesses from .001" to .010" in standard packages 6" x 100" cans. Special slit widths are available on request. Typical weight: .010" x 6" x 100" = 1.94lbs.

### COPPER SHIM TOLERANCES

DECIMAL THICKNESS	TOLERANCE
.001 - .003	+/- .0003
.004 - .007	+/- .0004
.008 - .010	+/- .0005
Width Tolerance	+/- .005

DMR Plastic Shim Stock is colour coded for your convenience. It is used where corrosion is a problem. The size of the pieces are 5" x 20", 10" x 20", 20" x 20". From .0005" to .030" Special slit widths are available on request.

DMR #	COLOUR	THICKNESS	SHEET SIZE	PIECES PER PACK
80901-0005	SILVER	0.0005	5" x 20"	20
80902-001	AMBER	0.001	5" x 20"	20
80903-0015	PURPLE	0.0015	5" x 20"	20
80904-002	RED	0.002	5" x 20"	20
80905-003	GREEN	0.003	5" x 20"	20
80906-004	TAN	0.004	5" x 20"	20
80907-005	BLUE	0.005	5" x 20"	20
80908-0075	MATTE	0.0075	5" x 20"	20
80909-010	BROWN	0.010	5" x 20"	20
80910-125	BLACK	0.0125	5" x 20"	20
80911-015	PINK	0.015	5" x 20"	20
80912-020	YELLOW	0.020	5" x 20"	20
80913-025	WHITE	0.025	5" x 20"	20
80914-030	CORAL	0.030	5" x 20"	20
80915-040	CLEAR	0.040	5" x 20"	10
80916-050	CLEAR	0.050	5" x 20"	10
80917-060	CLEAR	0.060	5" x 20"	10

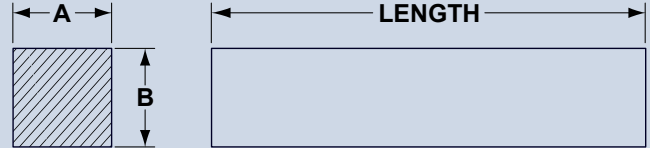
DMR #	COLOUR	THICKNESS	SHEET SIZE	PIECES PER PACK
80001-0005	SILVER	0.0005	10" x 20"	20
80002-001	AMBER	0.001	10" x 20"	20
80003-0015	PURPLE	0.0015	10" x 20"	20
80004-002	RED	0.002	10" x 20"	20
80005-003	GREEN	0.003	10" x 20"	20
80006-004	TAN	0.004	10" x 20"	20
80007-005	BLUE	0.005	10" x 20"	20
80008-0075	MATTE	0.0075	10" x 20"	20
80009-010	BROWN	0.010	10" x 20"	20
80010-125	BLACK	0.0125	10" x 20"	20
80011-015	PINK	0.015	10" x 20"	20
80012-020	YELLOW	0.020	10" x 20"	20

DMR #	COLOUR	THICKNESS	SHEET SIZE	PIECES PER PACK
80013-025	WHITE	0.025	10" x 20"	20
80014-030	CORAL	0.030	10" x 20"	20
80015-040	CLEAR	0.040	10" x 20"	10
80016-050	CLEAR	0.050	10" x 20"	10
80017-060	CLEAR	0.060	10" x 20"	10

DMR #	COLOUR	THICKNESS	SHEET SIZE	PIECES PER PACK
80118-0005	SILVER	0.0005	20" x 20"	10
80119-001	AMBER	0.001	20" x 20"	10
80120-0015	PURPLE	0.0015	20" x 20"	10
80121-002	RED	0.002	20" x 20"	10
80122-003	GREEN	0.003	20" x 20"	10
80123-004	TAN	0.004	20" x 20"	10
80124-005	BLUE	0.005	20" x 20"	10
80125-0075	MATTE	0.0075	20" x 20"	10
80126-010	BROWN	0.010	20" x 20"	10
80127-125	BLACK	0.0125	20" x 20"	10
80128-015	PINK	0.015	20" x 20"	10
80129-020	YELLOW	0.020	20" x 20"	10
80130-025	WHITE	0.025	20" x 20"	10
80131-030	CORAL	0.030	20" x 20"	10
80132-040	CLEAR	0.040	20" x 20"	10
80133-050	CLEAR	0.050	20" x 20"	10
80134-060	CLEAR	0.060	20" x 20"	10

DMR#	SHEET SIZE	TOTAL # OF PIECES	THICKNESSES (ONE PIECE OF EACH THICKNESS)
80018-ASSORT	5" x 20"	14	0.0005", 0.001", 0.0015", 0.002", 0.003", 0.004", 0.005", 0.0075", 0.010", 0.0125", 0.015", 0.020", 0.025", 0.030"
80036-ASSORT	10" x 20"	14	0.0005", 0.001", 0.0015", 0.002", 0.003", 0.004", 0.005", 0.0075", 0.010", 0.0125", 0.015", 0.020", 0.025", 0.030"
80055-ASSORT	20" x 20"	14	0.0005", 0.001", 0.0015", 0.002", 0.003", 0.004", 0.005", 0.0075", 0.010", 0.0125", 0.015", 0.020", 0.025", 0.030"

All DMR™ steel keystock is available in 12" and 36" lengths with the size clearly marked on each bar. The material is 1018 carbon steel and is available with either zinc plated or plain finish, stainless and brass.



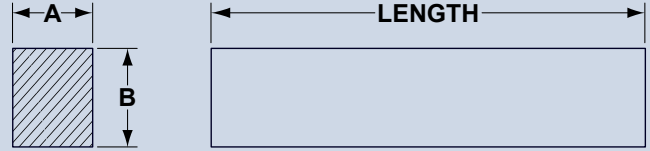
## TOLERANCES

SIZE	SQUARES		FLATS	
	ZINC PLATED	PLAIN FINISH	ZINC PLATED	PLAIN FINISH
3/4" and smaller	+ .003 to -.000	+ .002 to -.000	+ .004 to -.000	+ .003 to -.000
7/8 THRU 1-1/2"	+ .004 to -.000	+ .003 to -.000	+ .005 to -.000	+ .004 to -.000
1-5/8" THRU 2"	+ .005 to -.000	+ .004 to -.000	+ .006 to -.000	+ .005 to -.000

SIZE A&B	DMR™ PART # 12" LENGTH	DMR™ PART # 12" LENGTH UNPLATED	WT. PER PIECE	DMR™ PART # 36" LENGTH	DMR™ PART # 36" LENGTH UNPLATED	WT. PER PIECE
1/16" Square	0.063-12	0.063-12-U	0.013	0.063-36	0.063-36-U	.040
3/32" Square	0.093-12	0.093-12-U	0.030	0.093-36	0.093-36-U	0.089
1/8" Square	0.125-12	0.125-12-U	0.053	0.125-36	0.125-36-U	0.160
5/32" Square	0.156-12	0.156-12-U	0.083	0.156-36	0.156-36-U	0.249
3/16" Square	0.188-12	0.188-12-U	0.120	0.188-36	0.188-36-U	0.360
7/32" Square	0.219-12	0.219-12-U	0.163	0.219-36	0.219-36-U	0.489
1/4" Square	0.250-12	0.250-12-U	0.213	0.250-36	0.250-36-U	0.639
9/32" Square	0.281-12	0.281-12-U	0.269	0.281-36	0.281-36-U	0.807
5/16" Square	0.313-12	0.313-12-U	0.332	0.313-36	0.313-36-U	0.996
3/8" Square	0.375-12	0.375-12-U	0.478	0.375-36	0.375-36-U	1.434
7/16" Square	0.438-12	0.438-12-U	0.651	0.438-36	0.438-36-U	1.953
1/2" Square	0.500-12	0.500-12-U	0.850	0.500-36	0.500-36-U	2.550
9/16" Square	0.563-12	0.563-12-U	1.076	0.563-36	0.563-36-U	3.228
5/8" Square	0.625-12	0.625-12-U	1.329	0.625-36	0.625-36-U	3.987

SIZE A&B	DMR™ PART # 12" LENGTH	DMR™ PART # 12" LENGTH UNPLATED	WT. PER PIECE	DMR™ PART # 36" LENGTH	DMR™ PART # 36" LENGTH UNPLATED	WT. PER PIECE
11/16" Square	0.688-12	0.688-12-U	1.608	0.688-36	0.688-36-U	4.824
3/4" Square	0.750-12	0.750-12-U	1.914	0.750-36	0.750-36-U	5.742
13/16" Square	0.813-12	0.813-12-U	2.246	0.813-36	0.813-36-U	6.738
7/8" Square	0.875-12	0.875-12-U	2.605	0.875-36	0.875-36-U	7.815
15/16" Square	0.938-12	0.938-12-U	2.990	0.938-36	0.938-36-U	8.970
1" Square	1.000-12	1.000-12-U	3.402	1.000-36	1.000-36-U	10.206
1-1/6" Square	1.166-12	1.166-12-U	3.831	1.166-36	1.166-36-U	11.493
1-1/8" Square	1.125-12	1.125-12-U	4.306	1.125-36	1.125-36-U	12.918
1-3/16" Square	1.188-12	1.188-12-U	4.798	1.188-36	1.188-36-U	14.637
1-1/4" Square	1.250-12	1.250-12-U	5.316	1.250-36	1.250-36-U	15.948
1-5/16" Square	1.312-12	1.312-12-U	5.875	1.312-36	1.312-36-U	17.625
1-3/8" Square	1.375-12	1.375-12-U	6.432	1.375-36	1.375-36-U	19.296
1-7/16" Square	1.438-12	1.438-12-U	7.026	1.438-36	1.438-36-U	21.078
1-1/2" Square	1.500-12	1.500-12-U	7.665	1.500-36	1.500-36-U	22.990
1-5/8" Square	1.625-12	1.625-12-U	8.984	1.625-36	1.625-36-U	26.950
1-3/4" Square	1.750-12	1.750-12-U	10.419	1.750-36	1.750-36-U	31.257
1-7/8" Square	1.875-12	1.875-12-U	11.950	1.875-36	1.875-36-U	35.850
2" Square	2.000-12	2.000-12-U	13.600	2.000-36	2.000-36-U	40.800
2-1/4" Square	2.250-12	2.250-12-U	17.230	2.250-36	2.250-36-U	51.690
2-1/2" Square	2.500-12	2.500-12-U	21.270	2.500-36	2.500-36-U	63.810

All DMR™ steel keystock is available in 12" and 36" lengths with the size clearly marked on each bar. The material is 1018 carbon steel and is available with either zinc plated or plain finish, stainless and brass.

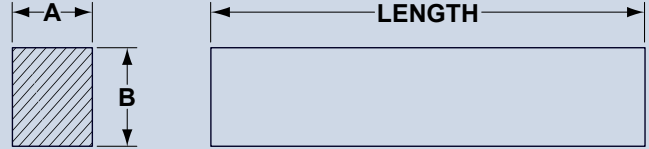


A	B	DMR™ PART # 12" LENGTH	DMR™ PART # 12" LENGTH UNPLATED	WT. PER PIECE	DMR™ PART # 36" LENGTH	DMR™ PART # 36" LENGTH UNPLATED	WT. PER PIECE
1/8"	3/16"	0.125-188-12	0.125-188-12-U	0.080	0.125-188-36	0.125-188-36-U	0.240
1/8"	1/4"	0.125-250-12	0.125-250-12-U	0.106	0.125-250-36	0.125-250-36-U	0.318
1/8"	3/8"	0.125-375-12	0.125-375-12-U	0.159	0.125-375-36	0.125-375-36-U	0.477
1/8"	1/2"	0.125-500-12	0.125-500-12-U	0.213	0.125-500-36	0.125-500-36-U	0.639
1/8"	5/8"	0.125-625-12	0.125-625-12-U	0.266	0.125-625-36	0.125-625-36-U	0.798
1/8"	3/4"	0.125-750-12	0.125-750-12-U	0.319	0.125-750-36	0.125-750-36-U	0.945
3/16"	1/4"	0.188-250-12	0.188-250-12-U	0.159	0.188-250-36	0.188-250-36-U	0.477
3/16"	5/16"	0.188-313-12	0.188-313-12-U	0.199	0.188-313-36	0.188-313-36-U	0.598
3/16"	3/8"	0.188-375-12	0.188-375-12-U	0.239	0.188-375-36	0.188-375-36-U	0.717
3/16"	7/16"	0.188-438-12	0.188-438-12-U	0.279	0.188-438-36	0.188-438-36-U	0.892
3/16"	1/2"	0.188-500-12	0.188-500-12-U	0.319	0.188-500-36	0.188-500-36	0.957
3/16"	5/8"	0.188-625-12	0.188-625-12-U	0.398	0.188-625-36	0.188-625-36	1.196
3/16"	7/8"	0.188-875-12	0.188-875-12-U	0.558	0.188-875-36	0.188-875-36	-
1/4"	5/16"	0.250-313-12	0.250-313-12-U	0.266	0.250-313-36	0.250-313-36-U	0.798
1/4"	3/8"	0.250-375-12	0.250-375-12-U	0.319	0.250-375-36	0.250-375-36-U	4.785
1/4"	7/16"	0.250-438-12	0.250-438-12-U	0.372	0.250-438-36	0.250-438-36-U	1.117
1/4"	1/2"	0.250-500-12	0.250-500-12-U	0.425	0.250-500-36	0.250-500-36-U	1.275
1/4"	9/16"	0.250-563-12	0.250-563-12-U	0.478	0.250-563-36	0.250-563-36-U	1.436
1/4"	5/8"	0.250-625-12	0.250-625-12-U	0.531	0.250-625-36	0.250-625-36-U	1.593
1/4"	3/4"	0.250-750-12	0.250-750-12-U	0.638	0.250-750-36	0.250-750-36-U	1.914
5/16"	3/8"	0.313-375-12	0.313-375-12-U	0.398	0.313-375-36	0.313-375-36-U	1.194
5/16"	7/16"	0.313-438-12	0.313-438-12-U	0.465	0.313-438-36	0.313-438-36-U	1.395
5/16"	1/2"	0.313-500-12	0.313-500-12-U	0.533	0.313-500-36	0.313-500-36-U	1.593
5/16"	9/16"	0.313-563-12	0.313-563-12-U	0.598	0.313-563-36	0.313-563-36-U	1.795
5/16"	5/8"	0.313-625-12	0.313-625-12-U	0.664	0.313-625-36	0.313-625-36-U	1.994

A	B	DMR™ PART # 12" LENGTH	DMR™ PART # 12" LENGTH UNPLATED	WT. PER PIECE	DMR™ PART # 36" LENGTH	DMR™ PART # 36" LENGTH UNPLATED	WT. PER PIECE
5/16"	3/4"	0.313-750-12	0.313-750-12-U	0.797	0.313-750-36	0.313-750-36-U	2.393
3/8"	7/16"	0.375-438-12	0.375-438-12-U	0.930	0.375-438-36	0.375-438-36-U	1.675
3/8"	9/16"	0.375-563-12	0.375-563-12-U	0.717	0.375-563-36	0.375-563-36-U	2.153
3/8"	5/8"	0.375-625-12	0.375-625-12-U	0.797	0.375-625-36	0.375-625-36-U	2.393
3/8"	3/4"	0.375-750-12	0.375-750-12-U	0.956	0.375-750-36	0.375-750-36-U	2.868
3/8"	1"	0.375-1000-12	0.375-1000-12-U	1.275	0.375-1000-36	0.375-1000-36-U	3.828
7/16"	1/2"	0.438-500-12	0.438-500-12-U	0.744	0.438-500-36	0.438-500-36-U	2.232
7/16"	9/16"	0.438-563-12	0.438-563-12-U	0.837	0.438-563-36	0.438-563-36-U	2.513
7/16"	5/8"	0.438-625-12	0.438-625-12-U	0.930	0.438-625-36	0.438-625-36-U	2.790
7/16"	3/4"	0.438-750-12	0.438-750-12-U	1.116	0.438-750-36	0.438-750-36-U	3.351
1/2"	9/16"	0.500-563-12	0.500-563-12-U	0.956	0.500-563-36	0.500-563-36-U	2.550
1/2"	5/8"	0.500-625-12	0.500-625-12-U	1.063	0.500-625-36	0.500-625-36-U	2.872
1/2"	1/16"	0.500-688-12	0.500-688-12-U	1.169	0.500-688-36	0.500-688-36-U	3.507
1/2"	3/4"	0.500-750-12	0.500-750-12-U	1.275	0.500-750-36	0.500-750-36-U	3.825
1/2"	7/8"	0.500-875-12	0.500-875-12-U	1.486	0.500-875-36	0.500-875-36-U	4.458
1/2"	1"	0.500-1000-12	0.500-1000-12-U	1.700	0.500-1000-36	0.500-1000-36-U	5.100
9/16"	5/8"	0.563-625-12	0.563-625-12-U	1.200	0.563-625-36	0.563-625-36-U	3.600
9/16"	3/4"	0.563-750-12	0.563-750-12-U	1.430	0.563-750-36	0.563-750-36-U	4.290
9/16"	1"	0.563-1000-12	0.563-1000-12-U	1.910	0.563-1000-36	0.563-1000-36-U	5.730
9/16"	1"	0.563-1250-12	0.563-1250-12-U	2.390	0.563-3650-36	0.563-3650-36-U	7.179
5/8"	1/16"	0.625-688-12	0.625-688-12-U	1.460	0.625-688-36	0.625-688-36-U	4.380
5/8"	3/4"	0.625-750-12	0.625-750-12-U	1.590	0.625-750-36	0.625-750-36-U	4.770
5/8"	3/4"	0.625-875-12	0.625-875-12-U	1.860	0.625-875-36	0.625-875-36-U	5.580
5/8"	1"	0.625-1000-12	0.625-1000-12-U	2.130	0.625-1000-36	0.625-1000-36-U	2.130
5/8"	1-1/4"	0.625-1250-12	0.625-1250-12-U	2.660	0.625-3650-36	0.625-3650-36-U	7.977
11/16"	3/4"	0.688-750-12	0.688-750-12-U	1.750	0.688-750-36	0.688-750-36-U	5.250
11/16"	7/8"	0.688-875-12	0.688-875-12-U	2.050	0.688-875-36	0.688-875-36-U	6.150
11/16"	1"	0.688-1000-12	0.688-1000-12-U	2.340	0.688-1000-36	0.688-1000-36-U	7.020
3/4"	7/8"	0.750-875-12	0.750-875-12-U	2.230	0.750-875-36	0.750-875-36-U	6.690

A	B	DMR™ PART # 12" LENGTH	DMR™ PART # 12" LENGTH UNPLATED	WT. PER PIECE	DMR™ PART # 36" LENGTH	DMR™ PART # 36" LENGTH UNPLATED	WT. PER PIECE
3/4"	1"	0.750-1000-12	0.750-1000-12-U	2.550	0.750-1000-36	0.750-1000-36-U	7.650
3/4"	1"	0.750-1125-12	0.750-1125-12-U	2.870	0.750-1125-36	0.750-1125-36-U	8.610
3/4"	1-1/2"	0.750-1500-12	0.750-1500-12-U	3.830	0.750-1500-36	0.750-1500-36-U	11.490
3/4"	1-3/4"	0.750-1750-12	0.750-1750-12-U	4.460	0.750-1750-36	0.750-1750-36-U	13.401
7/8"	1"	0.875-1000-12	0.875-1000-12-U	2.980	0.875-1000-36	0.875-1000-36-U	8.94
7/8"	1-1/8"	0.875-1125-12	0.875-1125-12-U	3.350	0.875-1125-36	0.875-1125-36-U	10.050
7/8"	1-1/4"	0.875-1250-12	0.875-1250-12-U	3.720	0.875-3650-36	0.875-3650-36-U	11.160
1"	1-1/8"	1.000-1125-12	1.000-1125-12-U	3.830	1.000-1125-36	1.000-1125-36-U	11.490
1"	1-1/4"	1.000-1250-12	1.000-1250-12-U	4.250	1.000-3650-36	1.000-3650-36-U	12.750
1"	1-1/2"	1.000-1500-12	1.000-1500-12-U	5.100	1.000-1500-36	1.000-1500-36-U	15.300
1"	1-3/4"	1.000-1.750-12	1.000-1.750-12-U	5.950	1.000-1.750-36	1.000-1.750-36-U	17.850
1"	2"	1.000-2000-12	1.000-2000-12-U	6.804	1.000-2000-36	1.000-2000-36-U	20.412
1-1/8"	1-1/4"	1.125-1250-12	1.125-1250-12-U	4.780	1.125-3650-36	1.125-3650-36-U	14.340
1-1/4"	1-3/8"	1.250-1375-12	1.250-1375-12-U	5.840	1.250-1375-36	1.250-1375-36-U	17.520
1-1/4"	1-1/2"	1.250-1500-12	1.250-1500-12-U	6.380	1.250-1500-36	1.250-1500-36-U	19.140
1-1/4"	1-3/4"	1.250-1750-12	1.250-1750-12-U	7.440	1.250-1750-36	1.250-1750-36-U	22.320
1-1/2"	1-3/4"	1.500-1750-12	1.500-1750-12-U	8.980	1.500-1750-36	1.500-1750-36-U	26.940
1-1/2"	2"	1.500-2000-12	1.500-2000-12-U	10.200	1.500-2000-36	1.500-2000-36-U	30.600
1-3/4"	2-1/2"	1.750-2500-12	1.750-2500-12-U	14.89	1.750-2500-36	1.750-2500-36-U	44.670
2"	2-1/2"	2.000-2500-12	2.000-2500-12-U	17.33	2.000-2500-36	2.000-2500-36-U	52.000

DMR™ undersize keystone is used where close or undersized tolerances are required. Made from 1018 steel and 303 stainless steel.



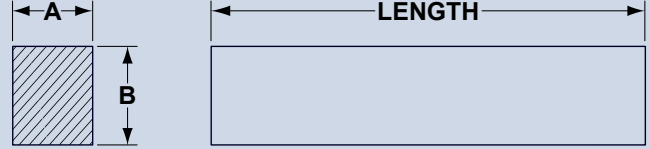
## TOLERANCES

1018 STEEL			303 STAINLESS		
SIZE	UNPLATED	ZINC PLATED	SIZE	SQUARES	FLATS
3/4" and smaller	+ .000 to -.003	+ .001 to -.002	1/8" – 1/4"	+ .000 to -.002	+ .004 to -.004
3/4" – 1 -1/2"	+ .000 to -.004	+ .001 to -.003	5/16" – 7/16"	+ .000 to -.003	+ .002 to -.002
Over 1-1/2"	+ .000 to -.005	+ .001 to -.004	1/2" 7/8"	+ .000 to -.004	+ .002 to -.002
–	–	–	1"	+ .000 to -.006	–

SIZES			DMR PART #		WEIGHT PER 12"
A	B	LENGTH	ZINC PLATED	UNPLATED	
1/8"	1/8"	12	U-0.125-Z	U-0.125	0.05
3/16"	1/8"	12	U-0.188-125-Z	U-0.188-125	0.08
3/16"	3/16"	12	U-0.188-Z	U-0.188	0.12
1/4"	1/8"	12	U-0.250-125-Z	U-0.250-125	0.11
1/4"	3/16"	12	U-0.250-188-Z	U-0.250-188	0.16
1/4"	1/4"	12	U-0.250-250-Z	U-0.250-250	0.21
5/16"	3/16"	12	U-0.313-188-Z	U-0.313-188	0.20
5/16"	1/4"	12	U-0.313-250-Z	U-0.313-250	0.27

SIZES			DMR PART #		WEIGHT PER 12"
A	B	LENGTH	ZINC PLATED	UNPLATED	
3/8"	3/16"	12	U-0.375-188-Z	U-0.375-188	0.24
3/8"	1/4"	12	U-0.375-250-Z	U-0.375-250	0.32
3/8"	5/16"	12	U-0.375-313-Z	U-0.375-313	0.40
3/8"	3/8"	12	U-0.375-Z	U-0.375	0.48
7/16"	1/4"	12	U-0.438-250-Z	U-0.438-250	0.37
7/16"	5/16"	12	U-0.438-313-Z	U-0.438-313	0.46
7/16"	3/8"	12	U-0.438-375-Z	U-0.438-375	0.59
7/16"	7/16"	12	U-0.438-Z	U-0.438	0.65
1/2"	1/4"	12	U-0.500-250-Z	U-0.500-250	0.42
1/2"	5/16"	12	U-0.500-313-Z	U-0.500-313	0.53
1/2"	3/8"	12	U-0.500-375-Z	U-0.500-375	0.64
1/2"	7/16"	12	U-0.500-438-Z	U-0.500-438	0.74
1/2"	1/2"	12	U-0.500-Z	U-0.500	0.85
9/16"	9/16"	12	U-0.563-Z	U-0.563	1.08
5/8"	5/16"	12	U-0.625-313-Z	U-0.625-313	0.66
5/8"	3/8"	12	U-0.625-375-Z	U-0.625-375	0.80
5/8"	1/2"	12	U-0.625-500-Z	U-0.625-500	1.06
5/8"	5/8"	12	U-0.625-Z	U-0.625	1.33
3/4"	3/4"	12	U-0.750-Z	U-0.750	1.91
7/8"	7/8"	12	U-0.875-Z	U-0.875	2.60
1"	1"	12	U-1.000-Z	U-1.000	3.40
1-1/8"	1-1/8"	12	U-1.125-Z	U-1.125	4.30
1-1/4"	1-1/4"	12	U-1.250-Z	U-1.250	5.31
1-3/8"	1-3/8"	12	U-1.375-Z	U-1.375	6.43
1-1/2"	1-1/2"	12	U-1.500-Z	U-1.500	7.65
1-3/4"	1-3/4"	12	U-1.750-Z	U-1.750	10.41
2"	2"	12	U-2.000-Z	U-2.000	13.60

DMR™ Metric Key Stock is made of the highest quality zinc plated cold drawn steel. Bars are cut – not sheared. Material 1018. Oversize tolerances: -.000 to +.0762mm. Sold in 12 inch and 1 meter (40 inch lengths.)



DMR™ PART # (12" LENGTH)	METRIC (MM)		INCH (")		WEIGHT PER PIECE	DMR™ PART # (1 METRE LENGTH)
	A	B	A	B		
4MM-12	4	4	.1575	.1575	0.080	4MM-1M
5MM-12	5	5	.1969	.1969	0.170	5MM-1M
5-8MM-12	5	8	.1969	.3150	0.234	5-8MM-1M
6MM-12	6	6	.2362	.2362	0.187	6MM-1M
6-10MM-12	6	10	.2362	.3937	0.206	6-10MM-1M
6-12MM-12	6	12	.2362	.4724	0.381	6-12MM-1M
6-14MM-12	6	14	.2362	.5512	0.446	6-14MM-1M
7MM-12	7	7	.2756	.2756	0.274	7MM-1M
7-8MM-12	7	8	.2756	.3150	0.313	7-8MM-1M
7-16MM-12	7	16	.2756	.6299	0.609	7-16MM-1M
7-18MM-12	7	18	.2756	.7087	0.688	7-18MM-1M
8MM-12	8	8	.3150	.3150	0.350	8MM-1M
8-10MM-12	8	10	.3150	.3937	0.438	8-10MM-1M
8-12MM-12	8	12	.3150	.4724	0.530	8-12MM-1M
8-20MM-12	8	20	.3150	.7874	0.863	8-20MM-1M
9-14MM-12	9	14	.3543	.5512	0.688	9-14MM-1M
9-22MM-12	9	22	.3543	.8661	1.109	9-22MM-1M
10MM-12	10	10	.3937	.3937	0.531	10MM-1M
10-12MM-12	10	12	.3937	.4724	0.662	10-12MM-1M
10-16MM-12	10	16	.3937	.6299	0.875	10-16MM-1M
11-18MM-12	11	18	.4331	.7087	1.063	11-18MM-1M

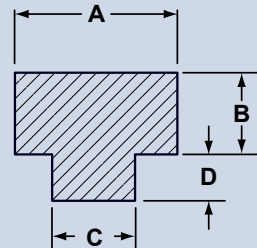
DMR™ PART # (12" LENGTH)	METRIC (MM)		INCH (")		WEIGHT PER PIECE	DMR™ PART # (1 METRE LENGTH)
	A	B	A	B		
12MM-12	12	12	.4724	.4724	0.781	12MM-1M
12-20MM-12	12	20	.4724	.7874	1.281	12-20MM-1M
14MM-12	14	14	.5512	.5512	1.047	14MM-1M
14-22MM-12	14	22	.5512	.8661	1.641	14-22MM-1M
16MM-12	16	16	.6299	.6299	1.375	16MM-1M
16-28MM-12	16	28	.6299	1.1024	2.375	16-28MM-1M
18MM-12	18	18	.7087	.7087	1.734	18MM-1M
18-32MM-12	18	32	.7087	1.2600	3.094	18-32MM-1M
20MM-12	20	20	.7874	.7874	2.125	20MM-1M
20-36MM	20	36	.7874	1.4173	3.813	20-36MM
22MM-12	22	22	.8661	.8661	2.596	22MM-1M
22-25MM-12	22	25	.8661	.9843	2.925	22-25MM-1M
22-40MM-12	22	40	.8661	1.5748	4.641	22-40MM-1M
25MM-12	25	25	.9843	.9843	3.28	25MM-1M
25-28MM-12	25	28	.9843	1.1024	3.692	25-28MM-1M

## DMR™ STEP KEYSTOCK

Cold finished. Oversize keystone ground down to A, B-D & C dimensions per tolerances listed below. Use for couplings, gears, sheaves, sprockets, pulleys – anything that keys to a shaft. Available in 12 inch lengths. Material 1018. Zinc plated for corrosion resistance.

Tolerances: Type 1

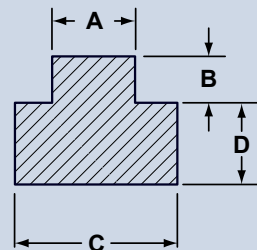
A & C dimensions	-0.000/+0.002
B/D dimensions	-0.003/+0.003
B & D dimensions	-0.004/+0.004



**TYPE 1**

Tolerances: Type 2

C & A dimensions	-0.000/+0.002
B/D dimensions	-0.005/+0.005
B & D dimensions	-0.005/+0.005



**TYPE 2**

### Physical & Mechanical Properties

<b>Tensile Strength (psi): 75,000 - 80,000</b>	<b>Elongation in 2": 18-25%</b>	<b>Brinell Hardness Range: 150-155</b>
<b>Yield Strength (psi): 60,000 - 70,000</b>	<b>Reduction of Area in 2": 50-55%</b>	<b>Rockwell B Hardness: 82</b>

DMR™ PART #	TYPE	A	B	C	D	WEIGHT PER PIECE
SK-1-1	1	3/16"	3/32"	1/8"	1/16"	0.088
SK-2-2	2	3/16"	3/32"	1/4"	3/32"	0.141
SK-3-2	2	3/16"	3/32"	1/4"	1/8"	0.166
SK-4-2	2	1/4"	1/8"	5/16"	1/8"	0.241
SK-5-2	2	1/4"	1/8"	3/8"	1/8"	0.269
SK-6-2	2	1/4"	1/8"	3/8"	3/16"	0.347
SK-7-1	1	3/8"	3/16"	5/16"	1/8"	0.375
SK-8-1	1	3/8"	3/16"	5/16"	5/32"	0.406
SK-9-2	2	3/8"	3/16"	7/16"	5/32"	0.475
SK-10-2	2	3/8"	3/16"	1/2"	3/16"	0.562
SK-11-2	2	3/8"	3/16"	1/2"	1/4"	0.68
SK-12-1	1	1/2"	1/4"	7/16"	5/32"	0.663
SK-13-2	2	1/2"	1/4"	9/16"	3/16"	0.788
SK-14-2	2	1/2"	1/4"	5/8"	3/16"	0.827
SK-15-2	2	1/2"	1/4"	5/8"	5/16"	1.09
SK-16-2	2	1/2"	1/4"	11/16"	1/4"	1.01
SK-17-1	1	5/8"	5/16"	3/8"	3/16"	0.906
SK-18-2	2	5/8"	5/16"	11/16"	1/4"	1.25
SK-19-1	1	3/4"	3/8"	1/2"	1/4"	1.39
SK-20-1	1	3/4"	3/8"	5/8"	3/16"	1.36
SK-21-1	1	3/4"	3/8"	5/8"	5/16"	1.64
SK-22-1	1	3/4"	3/8"	11/16"	1/4"	1.54
SK-23-2	2	3/4"	3/8"	13/16"	9/32"	1.74
SK-24-2	2	3/4"	3/8"	7/8"	7/16"	2.28
SK-25-2	2	3/4"	3/8"	15/16"	5/16"	1.97
SK-26-2	2	3/4"	3/8"	1"	1/2"	2.66
SK-27-1	1	1"	1/2"	7/8"	7/16"	3.02

<b>DMR™ Part #</b>	<b>Material</b>
<b>SZC-1</b>	<b>Steel</b> shipping weight -10.3lbs
<b>SZC-S</b>	<b>Stainless</b> shipping weight -10.4lbs
<b>SZC-B</b>	<b>Brass</b> shipping weight -11.3lbs

SIZE 12" LENGTH	# OF BARS
1/8" Square	5
3/16" Square	5
1/4" Square	5
5/16" Square	5
3/8" Square	5
7/16" Square	3
1/2" Square	3
<b>Total</b>	<b>31</b>

Tensile Strength PSI 75 - 85,000  
Brinnell Hardness Range 150 – 180

Elongation in 2" 18 -25%  
Yield Strength PSI 60 - 70,000

<b>DMR™ Part #</b>	
<b>MK-7-305</b>	<b>Metric</b> shipping weight - 9.3lbs

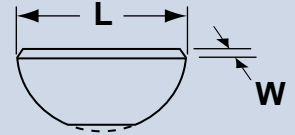
SIZE 12" LENGTH	# OF BARS
4 MM	5 pcs
5MM	5 pcs
6MM	5 pcs
7MM	5 pcs
8MM	5 pcs
10MM	3 pcs
12MM	3 pcs
<b>Total</b>	<b>31</b>

DMR 3 foot unplated round steel shafts are made from bar-quality cold drawn steel – 50% stronger than hot-rolled mild steel – which can be drilled and have keyways cut. Just right for furnace blower shafts, ventilator shafts, axles, farm equipment drive shafts and many uses you will discover yourself. Each shaft has a cold-drawn finish for use with brass, bronze copper or aluminum bushings. Bar ends are machine-cut, not sheared. Tolerances will run plus .000" to minus .002"

Material: 1018 carbon steel    Finish: Unplated    Tolerance: +.000" to -.002"

<b>DMR #</b>	<b>DIAMETER</b>	<b>WEIGHT OF BUNDLE</b>
0.125-36-RND	1/8"	0.38
0.188-36-RND	3/16"	0.85
0.250-36-RND	1/4"	1.50
0.313-36-RND	5/16"	2.34
0.375-36-RND	3/8"	3.38
0.438-36-RND	7/16"	4.60
0.500-36-RND	1/2"	6.00
0.563-36-RND	9/16"	7.62
0.625-36-RND	5/8"	9.39
0.750-36-RND	3/4"	13.50
0.875-36-RND	7/8"	18.42
0.938-36-RND	15/16"	21.00
1.000-36-RND	1"	24.00
1.125-36-RND	1-1/8"	30.42
1.188-36-RND	1-3/16"	34.11
1.250-36-RND	1-1/4"	37.50
1.375-36-RND	1-3/8"	46.11
1.438-36-RND	1-7/16"	49.50
1.500-36-RND	1-1/2"	54.00

Machined from 1035 steel, DMR™ Keys (Half Moon Keys) are available from stock in 50 S.A.E. standard sizes. Special sizes and materials such as alloy steel (A-8630) are available on special order from the factory. Assortments of popular sizes are available for the convenience of mechanics and repair personnel.



DMR #	W	L	USA STD. NO.	WEIGHT PER 100
WK-201	1/16"	1/4"	202	0.04
WK-207	3/32"	5/16"	302.5	0.09
WK-211	1/16"	3/8"	203	0.09
WK-212	3/32"	3/8"	303	0.13
WK-213	1/8"	3/8"	403	0.15
WK-01	1/16"	1/2"	204	0.13
WK-02	3/32"	1/2"	304	0.19
WK-03	1/8"	1/2"	404	0.25
WK-04	3/32"	5/8"	305	0.3
WK-05	1/8"	5/8"	405	0.39
WK-06	5/32"	5/8"	505	0.49
WK-61	3/16"	5/8"	605	0.58
WK-07	1/8"	3/4"	406	0.61
WK-08	5/32"	3/4"	506	0.75
WK-09	3/16"	3/4"	606	0.9
WK-91	1/4"	3/4"	806	1.2
WK-10	5/32"	7/8"	507	1.1
WK-11	3/16"	7/8"	607	1.3
WK-12	7/32"	7/8"	707	1.5
WK-A	1/4"	7/8"	807	1.7
WK-141	1/4"	15/16"	-	2
WK-13	3/16"	1"	608	1.7
WK-14	7/32"	1"	708	2

DMR #	W	L	USA STD. NO.	WEIGHT PER 100
WK-15	1/4"	1"	808	2.3
WK-B	5/16"	1"	1008	2.9
WK-152	3/8"	1"	1208	3.6
WK-16	3/16"	1-1/8"	609	2.2
WK-17	7/32"	1-1/8"	709	2.5
WK-18	1/4"	1-1/8"	809	2.9
WK-C	5/16"	1-1/8"	1009	3.6
WK-19	3/16"	1-1/4"	610	2.7
WK-20	7/32"	1-1/4"	710	3.2
WK-21	1/4"	1-1/4"	810	3.6
WK-D	5/16"	1-1/4"	1010	4.5
WK-E	3/8"	1-1/4"	1210	5.4
WK-22	1/4"	1-3/8"	811	4.3
WK-23	5/16"	1-3/8"	1011	5.4
WK-F	3/8"	1-3/8"	1211	6.5
WK-245	1/4"	1-1/2"	812	5
WK-25	5/16"	1-1/2"	1012	6.3
WK-G	3/8"	1-1/2"	1212	7.5
WK-126	3/16"	2-1/8"	617-1	2.3
WK-127	1/4"	2-1/8"	817-1	3.1
WK-128	5/16"	2-1/8"	1017-1	3.9
WK-129	3/8"	2-1/8"	1217-1	4.7
WK-26	3/16"	2-1/8"	617	3.6
WK-27	1/4"	2-1/8"	817	4.8
WK-28	5/16"	2-1/8"	1017	6
WK-29	3/8"	2-1/8"	1217	7.2
WK-RX	1/4"	2-3/4"	822-1	6.4
WK-SX	5/16"	2-3/4"	1022	7.99
WK-TX	3/8"	2-3/4"	1222-1	9.6
WK-VX	1/2"	2-3/4"	1622-1	12.9

## DMR™ WOODRUFF KEY ASSORTMENT NO. 1

(WK #1 Assort) Packaged in a compartmented plastic box.

- Machined from 1035 Steel
- Standard SAE Sizes
- Contains 90 Keys

DMR #	NO.	QUANTITY	DMR #	NO.	QUANTITY	DMR #	NO.	QUANTITY
WK-01	1	5	WK-08	8	5	WK-15	15	5
WK-02	2	5	WK-09	9	5	WK-16	16	5
WK-03	3	5	WK-10	10	5	WK-18	18	5
WK-04	4	5	WK-11	11	5	WK-A	A	5
WK-05	5	5	WK-13	13	5	WK-B	B	5
WK-06	6	5	WK-14	14	5	WK-C	C	5
WK-07	7	5						

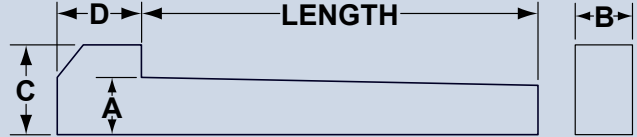
## DMR™ WOODRUFF KEY ASSORTMENT NO. 2

(WK #2 Assort)

- Machined from 1035 Steel
- Standard SAE Sizes
- Contains 204 Keys

DMR #	NO.	QUANTITY	DMR #	NO.	QUANTITY	DMR #	NO.	QUANTITY
WK-03	3	30	WK-16	16	6	WK-D	D	6
WK-211	211	30	WK-21	21	6	WK-E	E	4
WK-212	212	30	WK-24	24	4	WK-F	F	4
WK-213	213	30	WK-25	25	4	WK-126	126	6
WK-61	61	16	WK-28	28	3	WK-127	127	6
WK-91	91	10	WK-29	29	3	WK-128	128	6

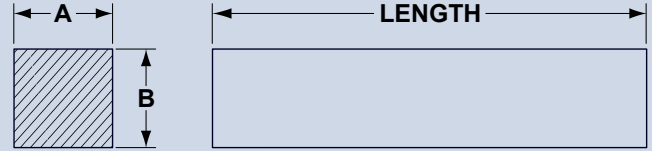
DMR™ gib head keys are used for holding pulleys and gears tightly on the shaft. They are tapered  $1/8''$  per foot to fit snugly on the shaft and are machined from 1018 steel.



DMR #	A	B	LENGTH	C	D	WEIGHT PER 100
0.250-1	1/4	1/4	1	1/2	3/8	3
0.250-1.5	1/4	1/4	1-1/2	1/2	3/8	3.9
0.250-2	1/4	1/4	2	1/2	3/8	4.7
0.250-2.5	1/4	1/4	2-1/2	1/2	3/8	5.4
0.250-3	1/4	1/4	3	1/2	3/8	6.2
0.313-1	5/16	5/16	1	1/2	7/16	4.6
0.313-1.5	5/16	5/16	1-1/2	1/2	7/16	5.8
0.313-2	5/16	5/16	2	1/2	7/16	7.3
0.313-2.5	5/16	5/16	2-1/2	1/2	7/16	8.5
0.313-3	5/16	5/16	3	1/2	7/16	9.8
0.375-1	3/8	3/8	1	5/8	1/2	7.3
0.375-1.5	3/8	3/8	1-1/2	5/8	1/2	9.1
0.375-2	3/8	3/8	2	5/8	1/2	10.9
0.375-2.5	3/8	3/8	2-1/2	5/8	1/2	12.9
0.375-3	3/8	3/8	3	5/8	1/2	14.7
0.375-3.5	3/8	3/8	3-1/2	5/8	1/2	16.5
0.375-4	3/8	3/8	4	5/8	1/2	17.9
0.500-1	1/2	1/2	1	3/4	5/8	13.5

<b>DMR #</b>	<b>A</b>	<b>B</b>	<b>LENGTH</b>	<b>C</b>	<b>D</b>	<b>WEIGHT PER 100</b>
0.500-1.5	1/2	1/2	1-1/2	3/4	5/8	16.9
0.500-2	1/2	1/2	2	3/4	5/8	20.3
0.500-2.5	1/2	1/2	2-1/2	3/4	5/8	23.7
0.500-3	1/2	1/2	3	3/4	5/8	27.2
0.500-3.5	1/2	1/2	3-1/2	3/4	5/8	30.6
0.500-4	1/2	1/2	4	3/4	5/8	33
0.500-6	1/2	1/2	6	3/4	5/8	46.7
0.625-4	5/8	5/8	4	1	3/4	55.9
0.625-6	5/8	5/8	6	1	3/4	75.3
0.750-5	3/4	3/4	5	1-1/8	7/8	97.6
0.750-6	3/4	3/4	6	1-1/8	7/8	110
0.875-6	7/8	7/8	6	1-1/4	1	156
1.000-6	1	1	6	1-1/2	1-1/8	211

- Manufactured from 1018 carbon steel
- Plain or zinc plated finish
- End styles available: both ends square, one end round, both ends round



DMR #	A	B	LENGTH	WEIGHT PER 100
.125X0.500SQ	1/8	1/8	1/2	0.21
.125X0.750SQ	1/8	1/8	3/4	0.32
.125X1.000SQ	1/8	1/8	1	0.42
.125X1.250SQ	1/8	1/8	1-1/4	0.52
.125X1.500SQ	1/8	1/8	1-1/2	0.63
.188X0.500SQ	3/16	3/16	1/2	0.5
.188X0.750SQ	3/16	3/16	3/4	0.75
.188X1.000SQ	3/16	3/16	1	1
.188X1.250SQ	3/16	3/16	1-1/4	1.25
.188X1.500SQ	3/16	3/16	1-1/2	1.5
.188X1.750SQ	3/16	3/16	1-3/4	1.75
.188X2.000SQ	3/16	3/16	2	2
.188X2.250SQ	3/16	3/16	2-1/4	2.25
.188X2.500SQ	3/16	3/16	2-1/2	2.5
.250X0.500SQ	1/4	1/4	1/2	0.88
.250X1.000SQ	1/4	1/4	1	1.74
.250X1.250SQ	1/4	1/4	1-1/4	2.18
.250X1.500SQ	1/4	1/4	1-1/2	2.63
.250X2.000SQ	1/4	1/4	2	3.51
.250X2.250SQ	1/4	1/4	2-1/4	3.95

<b>DMR #</b>	<b>A</b>	<b>B</b>	<b>LENGTH</b>	<b>WEIGHT PER 100</b>
.250X2.500SQ	1/4	1/4	2-1/2	4.37
.313X0.750SQ	5/16	5/16	3/4	2.08
.313X1.000SQ	5/16	5/16	1	2.74
.313X1.250SQ	5/16	5/16	1-1/4	3.43
.313X1.500SQ	5/16	5/16	1-1/2	4.13
.313X1.750SQ	5/16	5/16	1-3/4	4.82
.313X2.000SQ	5/16	5/16	2	5.51
.313X2.250SQ	5/16	5/16	2-1/4	6.2
.313X2.500SQ	5/16	5/16	2-1/2	6.86
.375X1.000SQ	3/8	3/8	1	3.98
.375X1.250SQ	3/8	3/8	1-1/4	4.99
.375X1.500SQ	3/8	3/8	1-1/2	6
.375X1.750SQ	3/8	3/8	1-3/4	7.01
.375X2.000SQ	3/8	3/8	2	8.02
.375X2.250SQ	3/8	3/8	2-1/4	9.02
.375X2.500SQ	3/8	3/8	2-1/2	9.98
.375X2.750SQ	3/8	3/8	2-3/4	10.99
.375X3.000SQ	3/8	3/8	3	12
.500X1.000SQ	1/2	1/2	1	7.06
.500X1.250SQ	1/2	1/2	1-1/4	8.84
.500X1.500SQ	1/2	1/2	1-1/2	10.63
.500X2.000SQ	1/2	1/2	2	14.2
.500X2.500SQ	1/2	1/2	2-1/2	17.68
.500X2.750SQ	1/2	1/2	2-3/4	19.47
.500X3.000SQ	1/2	1/2	3	21.25

**DMR Kit #: SP1**

<b>DMR #</b>	<b>QUANTITY</b>	<b>DIAMETER</b>	<b>LENGTH</b>
SP-062-0250	10	1/16"	1/4"
SP-062-0500	10	1/16"	1/2"
SP-062-0750	10	1/16"	3/4"
SP-078-0250	10	5/64"	1/4"
SP-078-0500	10	5/64"	1/2"
SP-078-0750	10	5/64"	3/4"
SP-094-0625	10	3/32"	5/8"
SP-094-1000	10	3/32"	1"
SP-094-1500	10	3/32"	1-1/2"
SP-125-0625	10	1/8"	5/8"
SP-125-1000	10	1/8"	1"
SP-125-1500	10	1/8"	1-1/2"

**DMR Kit #: SP2**

<b>DMR #</b>	<b>QUANTITY</b>	<b>DIAMETER</b>	<b>LENGTH</b>
SP-156-1000	10	5/32"	1"
SP-156-1500	10	5/32"	1-1/2"
SP-187-1000	10	3/16"	1"
SP-187-1500	10	3/16"	1-1/2"
SP-219-1500	10	7/32"	1-1/2"
SP-219-1750	10	7/32"	1-3/4"
SP-250-1500	10	1/4"	1-1/2"
SP-250-1750	10	1/4"	1-3/4"
SP-312-1500	10	5/16"	1-1/2"
SP-312-1750	10	5/16"	1-3/4"
SP-375-1500	10	3/8"	1-1/2"
SP-375-1750	10	3/8"	1-3/4"

### ROTOR CLIP® **PRECISION COMPONENTS**

#### Retaining Rings

Rotor Clip® • Spirolox® (Spiral Rings) • Rotor Clamps • Assembly Tools



#### Caplugs®

Caps • Plugs • Vinyl • Plastic • Sleeve Web • Edge Guard • Masking

#### Bushings

Dry sliding • Fiber Wound • Ceramic Linear Motion • Powdered Metal  
• Solid Metal • Plastic



#### Shims

Slotted Shim Kits & Insert Packs  
Shim Sheets Brass • Steel • Stainless • Plastic Shim-in-a-Can

### FLUID SEALING PRODUCTS

#### Shaft Seals

Metric & Inch Sizes • JM Clipper • V-Rings • Shaft Repair Sleeves  
Buna-N • Viton • EPDM • Silicone • PTFE • Polyacrylate

#### O-Rings

Metric & Inch Sizes • Kalrez (Hostile Environments)  
Buna-N • Viton • EPDM • Silicone • PTFE • Polyacrylate

#### Mechanical Seals

Type A • Type B • Type 1 • Type 2 • Type 21  
For most common pump & motor sizes

#### Braided Packing

Square Braid • Braid over Braid • Braid over Core • Interbraid  
PTFE • Graphite • FDA • GFO • Fibreglass





[www.daemar.com](http://www.daemar.com)

**DAEMAR® INC.**  
861 CRANBERRY COURT  
OAKVILLE, ON L6L 6J7  
PH/905/847/6500  
FX/905/847/6943  
TF/800/387/7115  
TFX/800/269/4571  
[sales@daemarinc.com](mailto:sales@daemarinc.com)

**DAEMAR® INC.**  
548 MELOCHE  
DORVAL, QC H9P 2T2  
PH/514/636/3113  
FX/514/633/1206  
TF/800/361/6826  
[mtlsales@daemarinc.com](mailto:mtlsales@daemarinc.com)

**DAEMAR® INC.**  
4472-97TH STREET  
EDMONTON, AB T6E 5R9  
PH/780/435/8899  
FX/780/435/9090  
TF/800/214/9590  
[edmsales@daemarinc.com](mailto:edmsales@daemarinc.com)

**DAEMAR® INC.**  
#25-1610 DERWENT WAY  
DELTA, BC V3M 6W1  
PH/604/523/6023  
FX/604/523/6123  
TF/800/663/0032  
[bcsales@daemarinc.com](mailto:bcsales@daemarinc.com)

**DAEMAR® INC.**  
1730 CUMBERLAND POINT  
DR., #2  
MARIETTA, GA 30067-9205  
PH/770/953/4710  
FX/770/953/4711  
TF/877/432/3627  
[gasales@daemarinc.com](mailto:gasales@daemarinc.com)

COH-001

