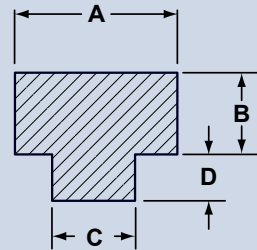


## DMR™ STEP KEYSTOCK

Cold finished. Oversize keystone ground down to A, B-D & C dimensions per tolerances listed below. Use for couplings, gears, sheaves, sprockets, pulleys – anything that keys to a shaft. Available in 12 inch lengths. Material 1018. Zinc plated for corrosion resistance.

Tolerances: Type 1

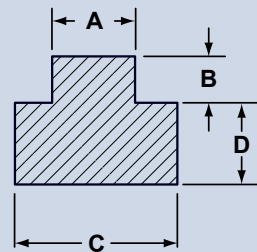
A & C dimensions	-0.000/+0.002
B/D dimensions	-0.003/+0.003
B & D dimensions	-0.004/+0.004



**TYPE 1**

Tolerances: Type 2

C & A dimensions	-0.000/+0.002
B/D dimensions	-0.005/+0.005
B & D dimensions	-0.005/+0.005



**TYPE 2**

### Physical & Mechanical Properties

<b>Tensile Strength (psi): 75,000 - 80,000</b>	<b>Elongation in 2": 18-25%</b>	<b>Brinell Hardness Range: 150-155</b>
<b>Yield Strength (psi): 60,000 - 70,000</b>	<b>Reduction of Area in 2": 50-55%</b>	<b>Rockwell B Hardness: 82</b>

DMR™ PART #	TYPE	A	B	C	D	WEIGHT PER PIECE
SK-1-1	1	3/16"	3/32"	1/8"	1/16"	0.088
SK-2-2	2	3/16"	3/32"	1/4"	3/32"	0.141
SK-3-2	2	3/16"	3/32"	1/4"	1/8"	0.166
SK-4-2	2	1/4"	1/8"	5/16"	1/8"	0.241
SK-5-2	2	1/4"	1/8"	3/8"	1/8"	0.269
SK-6-2	2	1/4"	1/8"	3/8"	3/16"	0.347
SK-7-1	1	3/8"	3/16"	5/16"	1/8"	0.375
SK-8-1	1	3/8"	3/16"	5/16"	5/32"	0.406
SK-9-2	2	3/8"	3/16"	7/16"	5/32"	0.475
SK-10-2	2	3/8"	3/16"	1/2"	3/16"	0.562
SK-11-2	2	3/8"	3/16"	1/2"	1/4"	0.68
SK-12-1	1	1/2"	1/4"	7/16"	5/32"	0.663
SK-13-2	2	1/2"	1/4"	9/16"	3/16"	0.788
SK-14-2	2	1/2"	1/4"	5/8"	3/16"	0.827
SK-15-2	2	1/2"	1/4"	5/8"	5/16"	1.09
SK-16-2	2	1/2"	1/4"	11/16"	1/4"	1.01
SK-17-1	1	5/8"	5/16"	3/8"	3/16"	0.906
SK-18-2	2	5/8"	5/16"	11/16"	1/4"	1.25
SK-19-1	1	3/4"	3/8"	1/2"	1/4"	1.39
SK-20-1	1	3/4"	3/8"	5/8"	3/16"	1.36
SK-21-1	1	3/4"	3/8"	5/8"	5/16"	1.64
SK-22-1	1	3/4"	3/8"	11/16"	1/4"	1.54
SK-23-2	2	3/4"	3/8"	13/16"	9/32"	1.74
SK-24-2	2	3/4"	3/8"	7/8"	7/16"	2.28
SK-25-2	2	3/4"	3/8"	15/16"	5/16"	1.97
SK-26-2	2	3/4"	3/8"	1"	1/2"	2.66
SK-27-1	1	1"	1/2"	7/8"	7/16"	3.02