

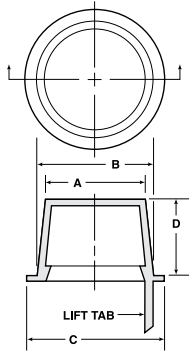
L Series Lift-Tab Tapered Plugs

Expanded!



Having the same dimensions as standard Tapered Plugs of like size, Series L Plugs offer the added convenience of an integral lift-tab which facilitates their removal. Since it extends above the plug body, the tab is easy to grasp. This is particularly advantageous with plugs in the smaller sizes and those installed in tight quarters or difficult to reach locations. A bead molded on the tab affords a positive grip. Pulling the tab exerts an off-center force which breaks the seal between plug and wall of opening, permitting instant withdrawal.

Material: Low-Density Polyethylene **Color*:** Red



Caplug No.	Dimensions								Packaging	
	A		B		C		D		Carton Quantity	Mini Pak Quantity
	In	mm	In	mm	In	mm	In	mm		
L-1	.236	5.99	.302	7.67	.44	11.18	.38	9.65	5000	1000
L-1X	.267	6.78	.335	8.51	.47	11.94	.38	9.65	5000	1000
L-2	.299	7.59	.365	9.27	.50	12.70	.38	9.65	5000	1000
L-2X	.330	8.38	.396	10.06	.53	13.46	.38	9.65	5000	1000
L-3	.361	9.17	.427	10.85	.56	14.22	.38	9.65	5000	1000
L-3X	.390	9.91	.456	11.58	.59	14.99	.38	9.65	5000	1000
L-4	.419	10.64	.485	12.32	.62	15.75	.38	9.65	5000	1000
L-4X	.447	11.35	.513	13.03	.66	16.76	.38	9.65	5000	1000
L-5	.471	11.96	.547	13.89	.69	17.53	.44	11.18	5000	1000
L-5X	.500	12.70	.576	14.63	.72	18.29	.44	11.18	5000	1000
L-6	.532	13.51	.608	15.44	.75	19.05	.44	11.18	5000	1000
L-6X	.550	13.97	.631	16.03	.75	19.05	.47	11.94	5000	1000
L-7	.580	14.73	.667	16.94	.81	20.57	.50	12.70	5000	1000
L-7X	.610	15.49	.695	17.65	.84	21.34	.50	12.70	5000	1000
L-8	.640	16.26	.727	18.47	.88	22.35	.50	12.70	5000	1000
L-8X	.643	16.33	.726	18.44	1.03	26.16	.50	12.70	5000	1000
L-8X	.675	17.15	.755	19.18	.88	22.35	.50	12.70	5000	1000
L-9	.690	17.53	.788	20.02	.94	23.88	.56	14.22	5000	1000
L-9X	.725	18.42	.823	20.91	.97	24.64	.56	14.22	5000	1000
L-10	.750	19.05	.848	21.54	1.00	25.40	.56	14.22	5000	1000
L-11	.802	20.37	.911	23.14	1.06	26.93	.62	15.75	5000	1000
L-11X	.815	20.70	.930	23.62	1.09	27.69	.62	15.75	5000	1000
L-12	.866	21.99	.975	24.77	1.12	28.45	.62	15.75	5000	1000
L-12X	.915	23.24	1.040	26.42	1.16	29.47	.68	17.27	5000	1000
L-13A	.960	24.38	1.047	26.59	1.19	30.23	.50	12.70	5000	1000
L-13	.964	24.49	1.090	27.69	1.25	31.75	.75	19.05	2500	500
L-13X	.995	25.27	1.145	29.08	1.31	33.28	.75	19.05	2500	500
L-14	1.094	27.79	1.215	30.86	1.41	35.82	.75	19.05	2500	500
L-14X	1.175	29.85	1.284	32.61	1.44	36.58	.62	15.75	2500	500
ST 250	1.179	29.95	1.286	32.66	1.44	36.58	.75	19.05	1500	300
L-15X	1.235	31.37	1.360	34.55	1.50	38.10	.81	20.57	2500	500
L-16	1.312	33.33	1.465	37.21	1.62	41.15	.88	22.35	1000	200
L-17	1.447	36.76	1.600	40.64	1.75	44.45	.88	22.35	1000	200
ST 254	1.451	36.86	1.601	40.67	1.75	44.45	.75	19.05	1000	200
L-18	1.560	39.63	1.682	42.72	1.88	47.75	.75	19.05	1000	200
L-18X	1.630	41.40	1.750	44.45	1.94	49.28	.75	19.05	1000	200
ST 255	1.633	41.48	1.750	44.45	1.84	46.74	.75	19.05	750	150
L-19	1.750	44.45	1.880	47.75	2.00	50.80	.75	19.05	1000	200
L-20	1.780	45.21	1.950	49.53	2.12	53.85	1.00	25.40	1000	200
L-210	1.844	46.84	2.000	50.80	2.12	53.85	1.00	25.40	1000	200
L-21	1.900	48.26	2.076	52.73	2.25	57.15	1.00	25.40	1000	200

* For other material and color options, contact a Daemar Sales Representative.