

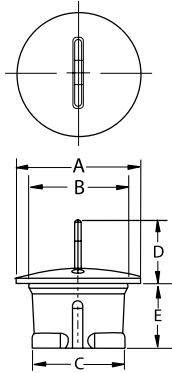
STC Series Snap-to-Connect Plugs



The STC Plug series is used for plugging quick-disconnect coupling ports. First introduced to the transportation industry, it is now being made available for many other applications where a reduction in assembly time installation or removal is desired. Specific applications include coupling ports on hydraulic motors, pumps and other control devices.

Note: C dimension includes bead

Material: FlexTemp (Thermoplastic Rubber) **Color*:** Black



Caplug No.	Dimensions										Packaging	
	A		B		C		D		E		Carton Quantity	Mini Pak Quantity
	In	mm	In	mm	In	mm	In	mm	In	mm		
STC-06-PLUG	.57	14.48	.43	10.92	.38	9.65	.56	14.22	.47	11.94	5000	1000
STC-08-PLUG	.70	17.78	.59	14.99	.51	12.95	.56	14.22	.60	15.24	5000	1000
STC-10-PLUG	.86	21.84	.72	18.29	.64	16.26	.56	14.22	.61	15.49	5000	1000
STC-12-PLUG	1.11	28.19	.89	22.61	.83	21.08	.56	14.22	.59	14.99	4000	800
STC-16-PLUG	1.36	34.54	1.13	28.70	1.07	27.18	.56	14.22	.99	25.15	2000	800

* For other material and color options, contact a Daemar Sales Representative.