

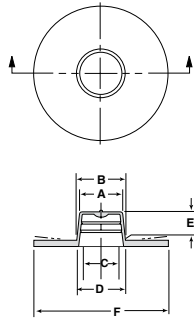
WWX Series Tapered Caps & Plugs with Extra-Wide, Extra-Thick Flanges



The extra-wide flange of the WWX Series provides extended visibility. This dummy-proof design prevents the mating component from being installed without first removing the cap. Available in 13 sizes, this versatile part may easily be used as a cap or plug, depending on application.



Material: Low-Density Polyethylene **Color:** Yellow



Caplug No.	Dimensions												Packaging	
	A		B		C		D		E		F		Carton Quantity	Mini Pak Quantity
	In	mm	In	mm	In	mm	In	mm	In	mm	In	mm		
WWX-8	.628	15.95	.725	18.42	.566	14.38	.643	16.33	.44	11.18	2.23	56.64	1000	200
WWX-10	.755	19.18	.870	22.10	.686	17.42	.788	20.02	.50	12.70	2.37	60.20	1000	200
WWX-12	.867	22.02	.975	24.77	.798	20.27	.889	22.58	.56	14.22	2.48	62.99	1000	200
WWX-13	.984	24.99	1.105	28.07	.909	23.09	1.014	25.76	.66	16.76	2.61	66.29	1000	200
WWX-14	1.110	28.20	1.253	31.83	1.046	26.57	1.171	29.74	.66	16.76	2.73	69.34	500	100
WWX-15	1.237	31.42	1.382	35.10	1.171	29.74	1.291	32.79	.66	16.76	2.88	73.15	800	160
WWX-16	1.312	33.32	1.465	37.21	1.243	31.57	1.375	34.93	.66	16.76	2.97	75.44	800	160
WWX-17	1.452	36.88	1.603	40.72	1.387	35.23	1.519	38.58	.66	16.76	3.10	78.74	700	140
WWX-18	1.580	40.13	1.714	43.54	1.513	38.43	1.624	41.25	.66	16.76	3.21	81.53	700	140
WWX-21	1.927	48.95	2.058	52.27	1.867	47.42	1.973	50.11	.66	16.76	3.56	90.42	600	120
WWX-230	2.120	53.85	2.290	58.17	2.036	51.71	2.210	56.13	1.00	25.40	3.79	96.27	300	60
WWX-250	2.395	60.83	2.602	66.09	2.322	58.98	2.530	64.26	1.13	28.70	4.10	104.14	200	40
WWX-44	2.638	67.01	2.795	70.99	2.547	64.69	2.670	67.82	1.13	28.70	4.26	108.20	200	40

* For other material and color options, contact a Daemar Sales Representative.